

July 1, 2019

DEPARTMENT OF CONSUMER AFFAIRS
DENTAL BOARD OF CALIFORNIA

CURRENT
FY 2019-20
Authorized Positions: 83.0

Filled: 63.0
Vacant: 20.0
Blanket: 1.0

OPERATIONS
DIVISION

ENFORCEMENT
DIVISION

(5.0)

Executive Officer
Karen Fischer
624-110-8840-001

Staff Services Manager III
Sarah Wallace
624-110-4802-001

(2.0)

Dental Consultant
Patrick Schenk
624-110-7843-002

Dental Consultant
Paul Jo
(CPEI/BCP)
624-110-7843-003

Staff Services Manager II (Supervisory)
VACANT
(S. Wallace 05/30/19) (rcis from 4969-001)
624-110-4801-xxx

Staff Services Manager II (Supervisory)
Bernal Vaba
624-110-4801-001

Supervising Investigator II
Carlos Alvarez
624-110-8597-003

(1.0)

OT (T)
Heidi Mason
624-110-1139-806

ADMINISTRATION

LICENSING & EXAMINATION

ENFORCEMENT

(6.0)

Staff Services Manager I
Wilbert Rumbaoa
624-110-4800-004

(4.0)

Staff Services Manager I
VACANT
(BCP 19-20)
624-110-4800-005

(13.0)

Staff Services Manager I
VACANT
(B. Vaba 06/19/19)
624-110-4800-002

(13.0)

Staff Services Manager I
Tina Vallery
(BCP 19-20)
624-210-4800-001

(8.0)

Staff Services Manager I
Aleco Bourdanotiis
624-110-4800-003

(8.5)

Staff Services Manager I
Chrystal Williams
624-110-4800-001

(6.0)

Supervising Investigator I
Ryan Blonien
624-110-8596-004

(8.0)

Supervising Investigator I
Patrick Morrissey
624-110-8596-003

(6.0)

Supervising Investigator I
VACANT
(R. Predmore 11/14/18)
624-110-8596-005

Administrative Services Unit

ITA
VACANT
(D. Sofia 03/29/19)
624-110-1401-001

AGPA
Paula Fernandez
624-110-5393-008

AGPA
Pahoua Thao
624-110-5393-011

AGPA
VACANT
(D. McClain 02/12/19)
(BCP 19-20)
624-110-5393-801

AGPA
Steve Long
624-110-5393-814

AGPA
VACANT
(24 mo-LT exp xx/xx/xx)
624-110-5393-907

Anesthesia Unit

AGPA
VACANT
(BCP 19-20)
624-110-5393-013

AGPA
VACANT
(BCP 19-20)
624-110-5393-014

SSA
VACANT
(BCP 19-20)
624-110-5157-019

Licensing and Examination Unit

AGPA
Jessica Olney
624-110-5393-803

SSA
Melissa Brokken
624-110-5157-003

SSA
Mirela Taran
624-110-5157-004

SSA
VACANT
(BCP 19-20)
624-110-5157-008

SSA
Sally Dukes
624-110-5157-013

OT (T)
Daniel Yoon
624-110-5157-017

OT (T)
Isis Stanley
624-110-1139-007

OT (T)
Jeff Pennington
624-110-1139-018

PT II
Bertha Hudson
624-110-9928-001

PT
Jessica Lopez
624-110-9927-002

Dental Assisting Program

AGPA
VACANT
(N. James 05/03/19)
624-210-5393-001

AGPA
Tajinder Kaur
624-210-5393-010

AGPA
Laura Fisher
624-210-5393-800

SSA
VACANT
(BCP 19-20)
624-210-5157-001

MST
Wendy McElroy
624-210-5278-001

MST
Gordon Redoble
624-210-5278-003

MST
VACANT
(R. Parks 03/12/19)
624-210-5278-004

MST
Crystal Hyer
624-210-5278-005

OT (T)
Jessica Cate
624-210-1139-004

OT (G)
Joseph Crawford
624-210-1138-001

OA (T)
Dorothy Perez
624-210-1379-003

OA (G)
Nora Abu-khaider
624-210-1441-002

Investigative Analysis Unit

Special Investigator
D. Mike Morshed
624-110-8612-006

Special Investigator
VACANT
(D. Robinson 03/29/19)
624-110-8612-008

AGPA
VACANT
(C. Johnson 06/14/19)
624-110-5393-808

AGPA
David Leary
624-110-5393-809

AGPA
Shalisa Stiger
624-110-5393-810

SSA
VACANT
(J. Nguyen 01/02/19)
624-110-5157-015

OT (T)
Deborah Whittall
(BCP 16/17)
624-110-1139-019

Complaint and Compliance Unit

AGPA
Jorrelle Abutin
624-110-5393-007

AGPA
Linda Garcia
624-110-5393-805

AGPA
F. Genie Albertsen
624-110-5393-806

SSA
Jacqueline Byrnes
(Incumbent is .5)
624-110-5157-001 (.5)

SSA
Tara Reasoner
624-110-5157-012

OT (T)
Stacey Saenz
624-110-1139-021

OT (T)
Gerald Santos
624-110-1139-012

OT (T)
VACANT
(C. Ramseier 05/03/19)
(BCP 16/17)
624-110-1139-020

Sacramento FO Investigator
Paul Tesi
624-110-8610-002

Investigator
Juan Fuentes
624-110-8610-010

Investigator
Joseph Tippins
624-110-8610-011

Investigator
Kelly Silva
(CPEI/BCP)
624-110-8610-012

Investigator
Westley Dunkin
624-110-8610-015

Orange FO Investigator
Shannon Reza
624-110-8610-003

Investigator
Thomas Tortorici
624-110-8610-004

Investigator
Denise Mehan
624-110-8610-005

Investigator
Kaycee Hunter
624-110-8610-007

Investigator
VACANT
(V. Williams 06/14/19)
624-110-8610-013

Special Investigator
Vicki Furtek
624-110-8612-003

OT (T)
Jimmy Zermeno
624-110-1139-001 (span)

Orange FO Investigator
VACANT
(K. Nguyen 02/08/19)
624-110-8610-001

Investigator
Monica Ackerson
624-110-8610-008 (span)

Investigator
Bernice Santa Ana
624-110-8610-009

Investigator
Caroline Montgomery
624-110-8610-014

Inspector II
Dwylon Calhoun
624-110-8833-002

(2.5)

Discipline Coordination Unit

AGPA
Neloofar Forget
(Incumbent is .5)
624-110-5393-009 (.5)

AGPA
VACANT
(J. Campos 06/20/19)
624-110-5393-804

AGPA
VACANT
(A. Mueller 04/03/19)
624-110-5393-813 (span)

DBC LEGEND

EO - 1
SSM III - 1
SSM II - 2
SI II - 1
Dental Consultant - 2
SI I - 3
SSM I - 6
INV - 14
SP INV - 3
INSPECT II - 1
ITA - 1
AGPA - 18.5
SSA - 9.5
MST - 4
PT - 1
PT II - 1
OT (T) - 9
OT (G) - 1
OA (T) - 2
OA (G) - 2

Black = Filled
Red = Vacant
Green = CPEI/BCP FY 10/11 (Included in 83.0)
Lime = BCP FY 16/17 (Included in the 83.0)
Purple = BCP FY 19/20 (Included in 83.0)
Lt. Blue = Blanket/Temporary Position (Not included in 83.0)

Karen Fischer, Executive Officer

Date

Personnel Office

Date

+ Entire program is designated CORI

July 31, 2020

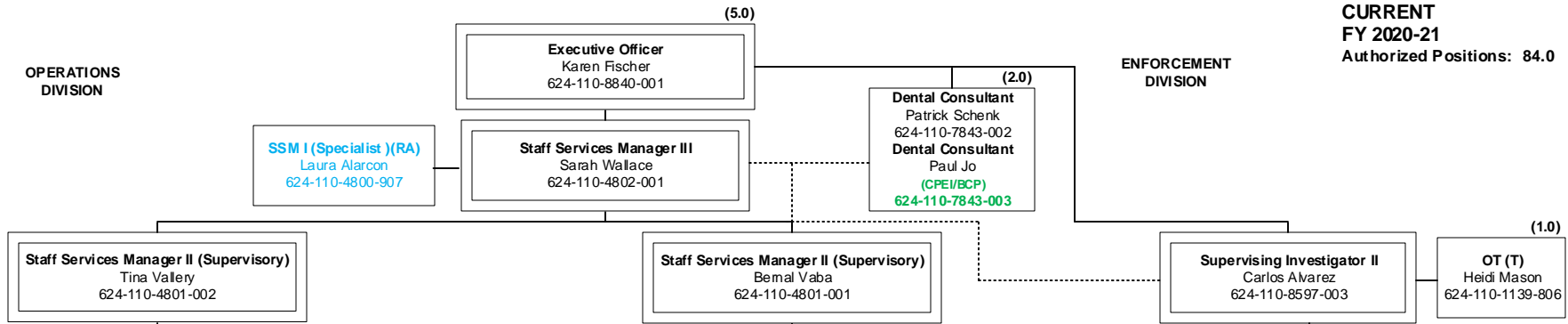
DEPARTMENT OF CONSUMER AFFAIRS
DENTAL BOARD OF CALIFORNIA

CURRENT
FY 2020-21
Authorized Positions: 84.0

Filed: 71.0
Vacant: 13.0
Blanket: 3.0

OPERATIONS
DIVISION

ENFORCEMENT
DIVISION



ADMINISTRATION

Staff Services Manager I
Wilbert Rumbaoa
624-110-4800-004

Administrative Services Unit
ITA
VACANT
(M. Maqsood 03/04/20)
624-110-1401-001
AGPA
Paula Fernandez
624-110-5393-008
AGPA
Pahoua Thao
624-110-5393-011
AGPA
Gabriel Nevin
(BCP 19-20)
624-110-5393-801
AGPA
Steve Long
624-110-5393-814

LICENSING & EXAMINATION

Staff Services Manager I
VACANT
(E. Zubaga 07/30/20)
(BCP 19-20)
624-110-4800-005

Anesthesia Unit
AGPA
John Tran
(BCP 19-20)
624-110-5393-013
AGPA
VACANT
(BCP 19-20)
624-110-5393-014
SSA
Onalis Cruz
(BCP 19-20)
624-110-5157-019

Staff Services Manager I
Erin Nickless
624-110-4800-002

Licensing and Examination Unit
AGPA
Jessica Olney
624-110-5393-803
SSA
Nguyet Tran
624-110-5157-003
SSA
Mirela Taran
624-110-5157-004
SSA
VACANT
(P. Ragali 03/06/20)
(BCP 19-20)
624-110-5157-008
SSA
Sally Dukes
624-110-5157-013
SSA
NeHandy Cochran
624-110-5157-017
OT (T)
Isis Stanley
624-110-1139-007
OT (T)
Jeff Pennington
624-110-1139-018
PT II
Bertha Hudson
624-110-9928-001
PT
Jessica Lopez
624-110-9927-002

Staff Services Manager I
Emilia Zuloaga
(BCP 19-20)
624-210-4800-001

Dental Assisting Program
AGPA
Daniel Yoon
624-210-5393-001
AGPA
VACANT
(T. Kaur 09/13/19)
624-210-5393-010
AGPA
Justin Lehr
(24 mo LT exp 03/31/22)
624-210-5393-800
SSA
Wendy McElroy
(BCP 19-20)
624-210-5157-001
MST
VACANT
(K. Wilson 07/08/20)
624-210-5278-001
MST
Gordon Redoble
624-210-5278-003
MST
Michael Meza
624-210-5278-004
MST
Crystal Hyer
624-210-5278-005
OT (T)
VACANT
(BCP 20-21)
624-210-1139-001
OT (T)
Alisa Phan
624-210-1139-004
OT (T)
VACANT
(C. Simpson 06/30/20)
624-210-1139-005
OA (T)
Dixita Dave
624-210-1379-003
OA (G)
Tanna Mayo
624-210-1441-002
AGPA
Laura Fisher
624-210-5393-907

ENFORCEMENT

Supervising Special Investigator I (Non-PO)
VACANT
(rcs from 4800-003)
(A. Bourdaniotis 08/29/19)
624-110-8549-xxx

Investigative Analysis Unit
Special Investigator
D. Mike Morshed
624-110-8612-006
Special Investigator
Aleta Prudhomme
624-110-8612-008
Special Investigator
Matt Pendergast
624-110-8612-001
AGPA
David Leary
624-110-5393-809
AGPA
Shalisa Stiger
624-110-5393-810
SSA
Saundra Rooke
624-110-5157-015
OT (T)
Bounthan Singkhumkhong
(BCP 16/17)
624-110-1139-019

Staff Services Manager I
Anthony Perez
(24 mo LT exp 03/31/22)
624-110-4800-001
Staff Services Manager I
Chrystal Williams
624-110-4800-907

Complaint and Compliance Unit
AGPA
Jorrelle Abutin
624-110-5393-007
AGPA
Linda Garcia
624-110-5393-805
AGPA
F. Genie Albertsen
624-110-5393-806
SSA
Jacqueline Bymes
(Incumbent is .5)
624-110-5157-001 (.5)
SSA
Vicky Williams
624-110-5157-012
OT (T)
Stacey Saenz
624-110-1139-021
OT (T)
VACANT
(G. Santos 10/18/19)
624-110-1139-012
OT (T)
VACANT
(C. Lew 01/14/20)
(BCP 16/17)
624-110-1139-020

Supervising Investigator I
Ryan Blonien
624-110-8596-004

Sacramento FO Investigator
Paul Tesi
624-110-8610-002
Investigator
Juan Fuentes
624-110-8610-010
Investigator
Joseph Tippins
624-110-8610-011
Investigator
Kelly Silva
(CPEI/BCP)
624-110-8610-012
Investigator
Westley Dunkin
624-110-8610-015

Discipline Coordination Unit
AGPA
Neloorai Forget
(Incumbent is .5)
624-110-5393-009 (.5)
AGPA
Paige Ragali
624-110-5393-804
AGPA
VACANT
(R. Espinoza 05/29/20)
624-110-5393-813
(span)

Supervising Investigator I
Patrick Morrissey
624-110-8596-003

Orange FO Investigator
Shannon Reza
624-110-8610-003
Investigator
Thomas Tortorici
624-110-8610-004
Investigator
Denise Mehan
624-110-8610-005
Investigator
Kaycee Hunter
624-110-8610-007
Investigator
Monica Ackerson
624-110-8610-008
(span)
Investigator
Bemice Santa Ana
624-110-8610-009
Investigator
Caroline Montgomery
624-110-8610-014

Orange FO Special Investigator
Timothy Fields
624-110-8612-009
Special Investigator
Daniel Zaldivar
624-110-8612-010
Special Investigator
Kevin Vossler
624-110-8612-003
Inspector II
Dwaylon Calhoun
624-110-8833-002
OT (T)
Jimmy Zermeo
624-110-1139-001
(span)

Supervising Sp Investigator I (N-PO)
VACANT
(rcs from 8596-005)
(R. Predmore 11/14/18)
624-110-8549-xxx

Orange FO Special Investigator
Timothy Fields
624-110-8612-009
Special Investigator
Daniel Zaldivar
624-110-8612-010
Special Investigator
Kevin Vossler
624-110-8612-003
Inspector II
Dwaylon Calhoun
624-110-8833-002
OT (T)
Jimmy Zermeo
624-110-1139-001
(span)

DBC LEGEND
EO - 1
SSM III - 1
SSM II - 2
SI II - 1
Dental Consultant - 2
SI I - 2
SSI - 2
SSM I - 5 + 1 RA + 1 Bklt
INV - 12
SP INV - 6
INSPECT II - 1
ITA - 1
AGPA - 17.5 + 1 Bklt
SSA - 9.5
MST - 4
PT - 1
PT II - 1
OT (T) - 11
OA (T) - 2
OA (G) - 2

Black = Filled
Red = Vacant
Green = CPEI/BCP FY 10/11 (Included in 84.0)
Lime = BCP FY 16/17 (Included in the 84.0)
Purple = BCP FY 19/20 (Included in 84.0)
Orange = BCP FY 20/21 (Included in 84.0)
Lt. Blue = Blanket/Temporary Position (Not included in 84.0)

Karen Fischer, Executive Officer _____ Date _____

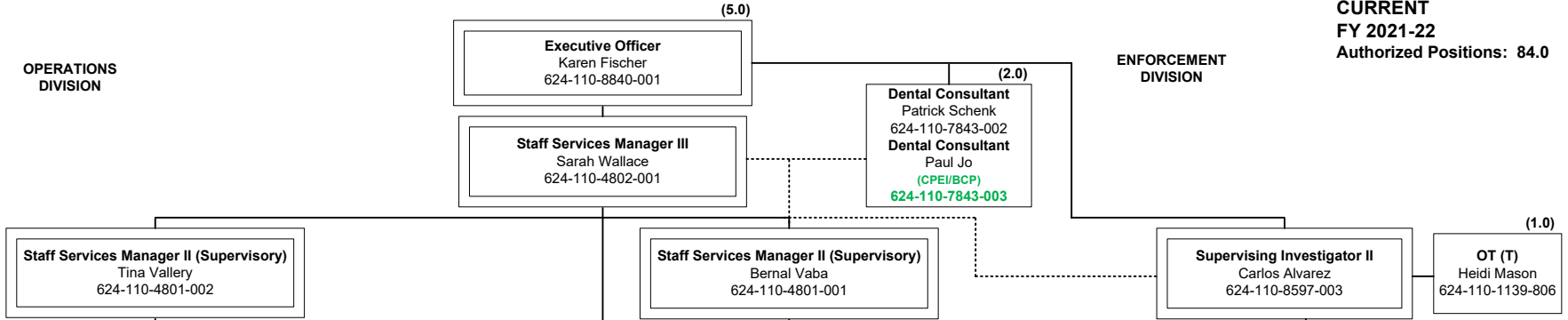
Personnel Office _____ Date _____

+ Entire program is designated CORI

Filled: 67.0
Vacant: 17.0
Blanket: 0.0

OPERATIONS DIVISION

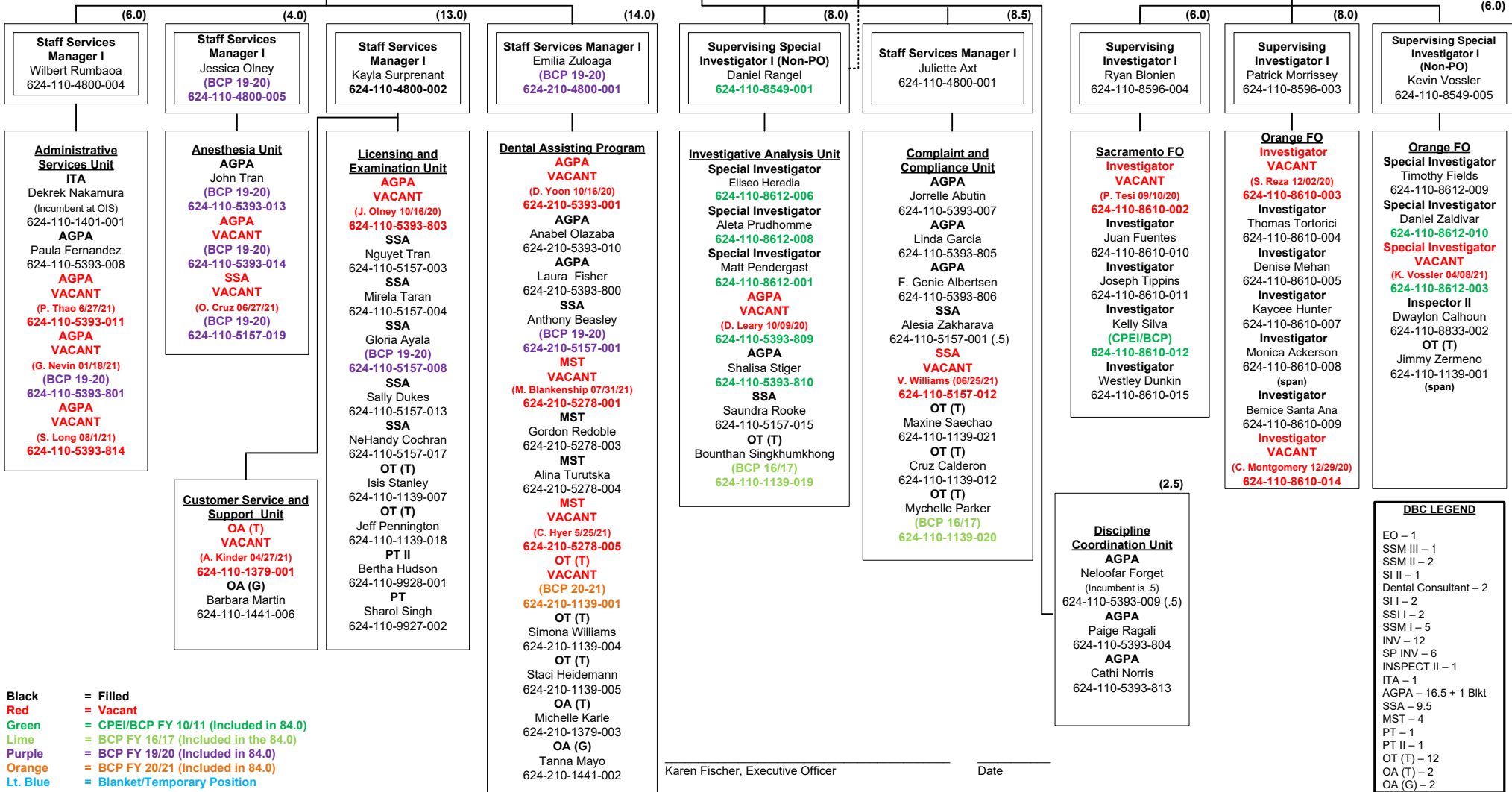
ENFORCEMENT DIVISION



ADMINISTRATION

LICENSING & EXAMINATION

ENFORCEMENT



Black = Filled
Red = Vacant
Green = CPEI/BCP FY 10/11 (Included in 84.0)
Lime = BCP FY 16/17 (Included in the 84.0)
Purple = BCP FY 19/20 (Included in 84.0)
Orange = BCP FY 20/21 (Included in 84.0)
Lt. Blue = Blanket/Temporary Position (Not included in 84.0)

Karen Fischer, Executive Officer _____ Date _____

Personnel Office _____ Date _____

DBC LEGEND

- EO – 1
- SSM III – 1
- SSM II – 2
- SI II – 1
- Dental Consultant – 2
- SI I – 2
- SSI I – 2
- SSM I – 5
- INV – 12
- SP INV – 6
- INSPECT II – 1
- ITA – 1
- AGPA – 16.5 + 1 Blkt
- SSA – 9.5
- MST – 4
- PT – 1
- PT II – 1
- OT (T) – 12
- OA (T) – 2
- OA (G) – 2

+ Entire program is designated CORI

Filled: 57.0
Vacant: 27.0
Blanket: 0.0

OPERATIONS
DIVISION

ENFORCEMENT
DIVISION

(5.0)

Interim Executive Officer
Sarah Wallace
624-110-8840-001

(2.0)

Dental Consultant
Patrick Schenk
624-110-7843-002

Dental Consultant
Paul Jo
(CPEI/BCP)
624-110-7843-003

Staff Services Manager III
VACANT
(S. Wallace 12/31/21)
624-110-4802-001

(1.0)

Staff Services Manager II (Supervisory)
Tina Vallery
624-110-4801-002

(1.0)

SSM I (Specialist)
David Bruggeman
624-110-4800-006

(1.0)

Staff Services Manager II (Supervisory)
Bernal Vaba
624-110-4801-001

(1.0)

Supervising Investigator II
VACANT
(C. Alvarez 5/30/22)
624-110-8597-003

(1.0)

OT (T)
VACANT
(H. Mason 5/31/22)
624-110-1139-806

ADMINISTRATION

(5.0)

Staff Services Manager I
Wilbert Rumbaoa
624-110-4800-004

Administrative Services Unit
ITA
Derek Nakamura
(Incumbent at OIS)
624-110-1401-001

AGPA
Paula Fernandez
624-110-5393-008

AGPA
Mirela Taran
624-110-5393-011

AGPA VACANT
(S. Long 08/1/21)
624-110-5393-814

AGPA
Kara Pearson
624-110-5393-907

LICENSING & EXAMINATION

(4.0)

Staff Services Manager I
Jessica Olney
(BCP 19-20)
624-110-4800-005

Anesthesia Unit
AGPA
John Tran
(BCP 19-20)
624-110-5393-013

AGPA VACANT
(J. Olney 10/16/20)
624-110-5393-803

AGPA VACANT
(N. Tran 4/29/22)
624-110-5393-014

SSA
Tavia Nguyen
(BCP 19-20)
624-110-5157-019

(13.0)

Staff Services Manager I
Paige Ragali
624-110-4800-002

Licensing and Examination Unit
AGPA VACANT
(J. Olney 10/16/20)
624-110-5393-803

SSA VACANT
(N. Tran 4/29/22)
624-110-5157-003

SSA VACANT
(D. Okhrimenko 2/24/22)
624-110-5157-004

SSA
Nigel Rayyan
(BCP 19-20)
624-110-5157-008

SSA
Sally Dukes
624-110-5157-013

SSA
NeHandy Cochran
624-110-5157-017

OT (T)
Isis Stanley
624-110-1139-007

OT (T)
Jeff Pennington
624-110-1139-018

PT II
Bertha Hudson
624-110-9928-001

PT VACANT
(S. Singh 1/31/22)
624-110-9927-002

Customer Service and Support Unit
OA (T)
VACANT
(A. Vargas 6/17/22)
624-110-1379-001

OA (G)
Barbara Martin
624-110-1441-006

(14.0)

Staff Services Manager I
VACANT
(E. Zuloaga 09/17/21)
(BCP 19-20)
624-210-4800-001

Dental Assisting Program
AGPA
Rikki Parks
624-210-5393-001

AGPA VACANT
(A. Olazaba 10/22/21)
624-210-5393-010

AGPA VACANT
(L. Fisher 10/22/21)
624-210-5393-800

SSA
Taylor Williams
(BCP 19-20)
624-210-5157-001

MST
Staci Heidemann
624-210-5278-001

MST
Gordon Redoble
624-210-5278-003

MST
Kaozoua Thao
624-210-5278-004

MST
Simona Williams
624-210-5278-005

OT (T)
Janelle Brown-Pinzotto
(BCP 20-21)
624-210-1139-001

OT (T)
VACANT
(S. Williams 5/22/22)
624-210-1139-004

OT (T)
VACANT
(S. Heidemann 5/22/22)
624-210-1139-005

OA (T)
Lina Johnson
624-210-1379-003

OA (G)
Kaitlyn Eller
624-210-1441-002

ENFORCEMENT

(8.0)

Supervising Special Investigator I (Non-PO)
VACANT
(D. Rangel 1/16/22)
624-110-8549-001

Investigative Analysis Unit
Special Investigator
Matt Pendergast
624-110-8612-001

Special Investigator
Jon Barkley (OOC)
624-110-8612-006

Special Investigator VACANT
(A. Prudhomme 5/22/22)
624-110-8612-008

Special Investigator VACANT
(S. Peterson 6/26/22)
624-110-8612-002

SSA
Saundra Rooke
624-110-5157-015

Inspector II VACANT
(rcIs from 5393-809)
(D. Leary 10/09/20)
624-110-8833-xxx

OT (T)
Bounthan Singkhumkhong
(BCP 16/17)
624-110-1139-019

(9.0)

Staff Services Manager I
VACANT
(E. Zuloaga 3/27/22)
624-110-4800-001

Complaint and Compliance Unit
AGPA
Alesia Zakharava
624-110-5393-007

AGPA
F. Genie Albertsen
624-110-5393-806

SSA
Gloria Padilla-Todd
624-110-5157-001

SSA
Alina Turutska
624-110-5157-002

SSA
Heidi Mason
624-110-5157-012

OT (T)
Cruz Calderon
624-110-1139-012

OT (T)
Mychelle Parker
(BCP 16/17)
624-110-1139-020

OT (T)
Arturo Jimenez
624-110-1139-021

OT (T)
VACANT
624-110-1139-907

(6.0)

Supervising Investigator I
Ryan Blonien (OOC)
624-110-8596-004

Sacramento FO Investigator
Juan Fuentes
624-110-8610-010

Investigator
Joseph Tippins
624-110-8610-011

Investigator Kelly Silva
(CPEI/BCP)
624-110-8610-012

Investigator VACANT
(W. Dunkin 3/31/22)
624-110-8610-015

Inspector II VACANT
(rcIs from 8610-002)
(P. Tesi 09/10/20)
624-110-8833-xxx

(2.0)

Discipline Coordination Unit
AGPA VACANT
(P. Ragali 3/20/22)
624-110-5393-804

AGPA
Cathi Norris
624-110-5393-813

(7.0)

Supervising Investigator I
Patrick Morrissey
624-110-8596-003

Orange FO Investigator
VACANT
(S. Reza 12/02/20)
624-110-8610-003

Investigator
Thomas Tortorici
624-110-8610-004

Investigator VACANT
(D. Mehan 2/3/22)
624-110-8610-005

Investigator
Kaycee Hunter
624-110-8610-007

Investigator
Monica Ackerson
624-110-8610-008
(Bilingual)

Investigator
Bernice Santa Ana
624-110-8610-009

(7.0)

Supervising Special Investigator I (Non-PO)
Kevin Vossler
624-110-8549-005

Orange FO Special Investigator
Olga Quezada
624-110-8612-003

Special Investigator
Timothy Fields
624-110-8612-009

Special Investigator
Daniel Zaldivar
624-110-8612-010

Inspector II
Dwaylon Calhoun
624-110-8833-002

Inspector II VACANT
(rcIs from 8610-014)
(C. Montgomery 12/29/20)
624-110-8833-xxx

OT (T)
Jimmy Zermeo
624-110-1139-001
(Bilingual)

Black = Filled
Red = Vacant
Green = CPEI/BCP FY 10/11 (Included in 84.0)
Lime = BCP FY 16/17 (Included in the 84.0)
Purple = BCP FY 19/20 (Included in 84.0)
Orange = BCP FY 20/21 (Included in 84.0)
Lt. Blue = Blanket/Temporary Position (Not included in 84.0)

Sarah Wallace, Interim Executive Officer Date
Personnel Office Date

DBC LEGEND

- EO – 1
- SSM III – 1
- SSM II – 2
- SI II – 1
- Dental Consultant – 2
- SI I – 2
- SSI I – 2
- SSM I – 6
- INV – 10
- SP INV – 7
- INSPECT II – 4
- ITA – 1
- AGPA – 13
- SSA – 11
- MST – 4
- PT – 1
- PT II – 1
- OT (T) – 11
- OA (T) – 2
- OA (G) – 2

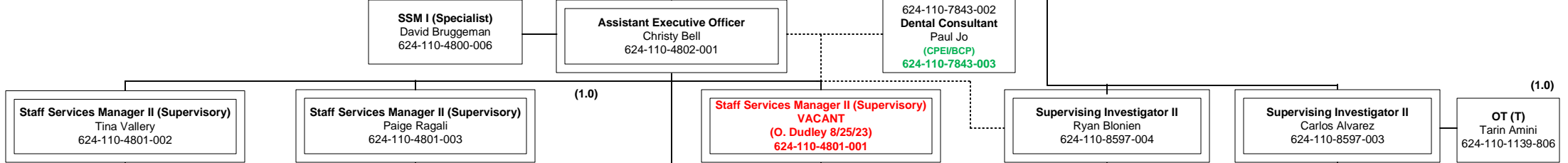
Filled: 75.0
Vacant: 9.0
Blanket: 0.0

(5.0)

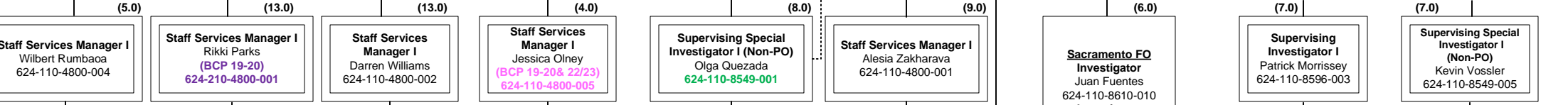
(2.0)

ENFORCEMENT DIVISION

(1.0)



ADMINISTRATION LICENSING & EXAMINATION ENFORCEMENT



Administrative Services Unit
ITA
Zackery Morales
624-110-1401-001
AGPA
Kara Pearson
624-110-5393-008
AGPA
Mirela Taran
624-110-5393-011
AGPA
Yvette Ramirez
624-110-5393-814

Dental Assisting Licensing and Examination Unit
AGPA
VACANT
(A. McDaniel 7/7/23)
624-210-5393-010
AGPA
Taylor Williams
(BCP 19-20)
624-210-5393-011
SSA
Shavonne Williams
624-210-5157-003
SSA
Staci Heidemann
624-210-5157-002
SSA
Charlie Moua
624-210-5157-004
SSA
Pang Xiong
624-210-5157-xxx
MST
Gordon Redoble
624-210-5278-003
OT (T)
Janelle Brown-Pinizzotto
(BCP 20-21)
624-210-1139-001
MST
Marvel Bowen
624-210-5278-001
OT (T) (OOC)
Lina Johnson
624-210-1379-003
OT (T)
VACANT
(K. Eller 4/17/23)
(rls from 1441-002)
624-210-1139-xxx

Dental Licensing and Examination Unit
AGPA
Richard Eaddy
624-110-5393-803
AGPA
VACANT
(C. Norris 9/1/23)
624-110-5393-813
SSA
Abby LeCureux
624-110-5157-003
SSA
Jessica Donaldson
624-110-5157-004
SSA
Stephanie Schenk
(BCP 19-20)
624-110-5157-008
SSA
VACANT
(S. Dukes 8/15/23)
624-110-5157-013
SSA
NeHandy Cochran
624-110-5157-017
SSA
Marlene Gonzalez
624-110-5157-020
MST
Isis Stanley
624-110-5278-001
OT (T)
Jeff Pennington
624-110-1139-018
PT
Hallie Hendrickson
624-110-9927-002
OT (T)
Marisa Cornejo
624-110-1139-001
OT (T)
(rls from 1441-006)
(B. Martin 03/31/23)
VACANT
624-110-1139-xxx

Anesthesia Unit
AGPA
John Tran
(BCP 19-20& 22/23)
624-110-5393-013
AGPA
Victor Libet
(BCP 19-20& 22/23)
624-110-5393-014
SSA
Tavia Nguyen
(BCP 19-20& 22/23)
624-110-5157-019

Investigative Analysis Unit
Special Investigator
Matt Pendergast
624-110-8612-001
Special Investigator
Tina Bilodeau
624-110-8612-006
Special Investigator
Travis Cooke
624-110-8612-008
Special Investigator
Bernal Vaba
624-110-8612-002
AGPA
Saundra Rooke
624-110-5393-015
SSA
Maia Grenell
624-110-5157-015
Inspector II
Richard Daniel
624-110-8833-003
OT (T)
Bounthan Singkhumkhong
(BCP 16/17)
624-110-1139-019

Complaint and Compliance Unit
AGPA
A. Turutksa
624-110-5393-007
AGPA
F. Genie Albertsen
624-110-5393-806
SSA
Gloria Padilla-Todd
624-110-5157-001
(bilingual)
SSA
Ryan Walters
624-110-5157-002
SSA
Heidi Mason
624-110-5157-012
OT (T)
Li Lin
624-110-1139-012
OT (T)
Mychelle Parker
(BCP 16/17)
624-110-1139-020
OT (T)
Arturo Jimenez
624-110-1139-021

Sacramento FO Investigator
Juan Fuentes
624-110-8610-010
Investigator
Joseph Tippins
624-110-8610-011
Investigator
Kelly Silva
(CPEI/BCP)
624-110-8610-012
Investigator
VACANT
(W. Dunkin 3/31/22)
624-110-8610-015

Orange FO Investigator
Jeanette De Lira
624-110-8610-003
Investigator
Thomas Tortoric
624-110-8610-004
Investigator
Paul De La Cruz
624-110-8610-005
Investigator
Kaycee Hunter
624-110-8610-007
Investigator
Monica Ackerson
624-110-8610-008
(Bilingual)
Investigator
Bernice Santa Ana
624-110-8610-009

Orange FO Special Investigator
Regina Armstrong
624-110-8612-003
Special Investigator
Timothy Fields
624-110-8612-009
Special Investigator
Daniel Zaldivar
624-110-8612-010
SSA
Jimmy Zermeno
624-110-5157-800
Inspector II
Dwaylon Calhoun
624-110-8833-002
Inspector II
VACANT
(R. Armstrong 06/01/23)
624-110-8833-004
OT (T)
VACANT
(J. Zermeno 5/15/23)
624-110-1139-001
(Bilingual)

Discipline Coordination Unit
AGPA
Ashley Gray
624-110-5393-804

DBC LEGEND
EO – 1
SSM III – 1
SSM II – 3
SI II – 2
Dental Consultant – 2
SI I – 1
SSI – 2
SSM I – 6
INV – 10
SP INV – 7
INSPECT II – 3
ITA – 1
AGPA – 13
SSA – 16
MST – 3
PT – 1
OT (T) – 11
OA (T) – 1

Legend:
Black = Filled
Red = Vacant
Green = CPEI/BCP FY 10/11 (Included in 84.0)
Lime = BCP FY 16/17 (Included in the 84.0)
Purple = BCP FY 19/20 (Included in 84.0)
Pink = BCP FY19/20 & 22/23 (Included in 84.0)
Orange = BCP FY 20/21 (Included in 84.0)
Lt. Blue = Blanket/Temporary Position (Not included in 84.0)

Tracy Montez, Executive Officer _____ Date _____
Personnel Office _____ Date _____